



2014 Profile of Community Health Centers Santa Clara & San Mateo County

Member Community Health Organizations

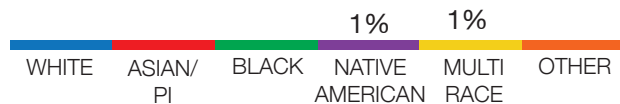
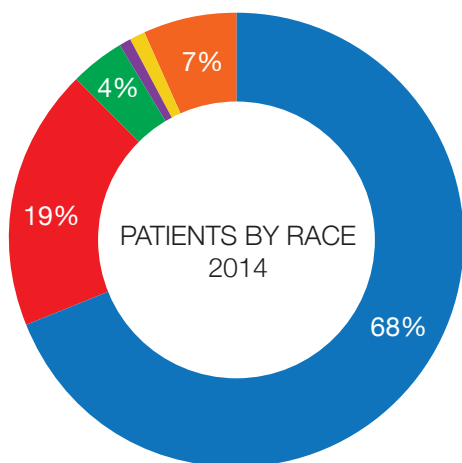
Asian Americans for Community Involvement
Gardner Family Health Network
Indian Health Center of Santa Clara Valley
Mar Monte Community Clinic
MayView Community Health Center

North East Medical Services
Planned Parenthood Mar Monte
Ravenswood Family Health Center
RotaCare Bay Area, Inc.
School Health Clinics of Santa Clara County

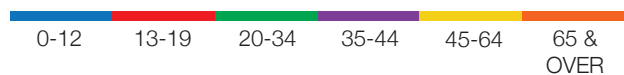
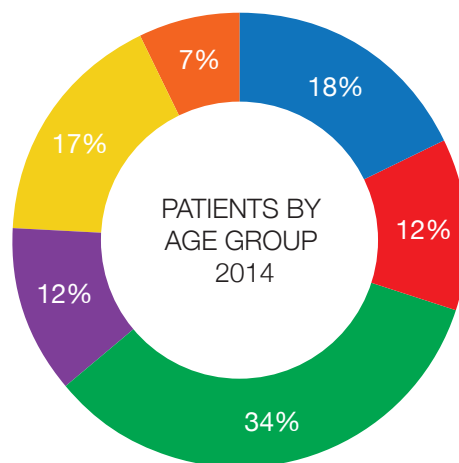
Total Number of Community Health Organizations Reporting – 10 (38 sites)

Patients
168,508

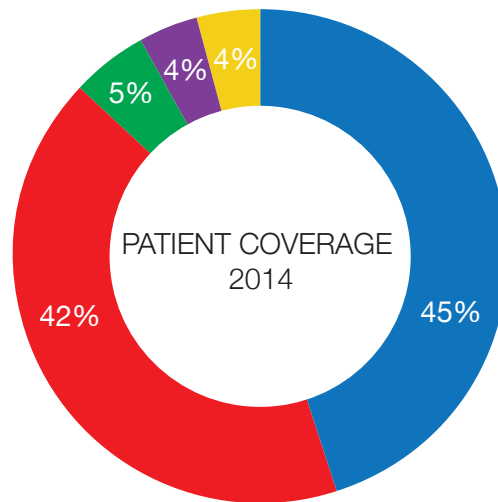
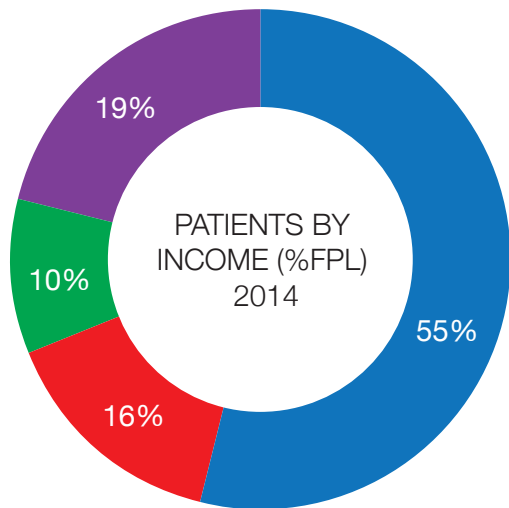
Encounters
465,313



Over 60% of patients are Hispanic.

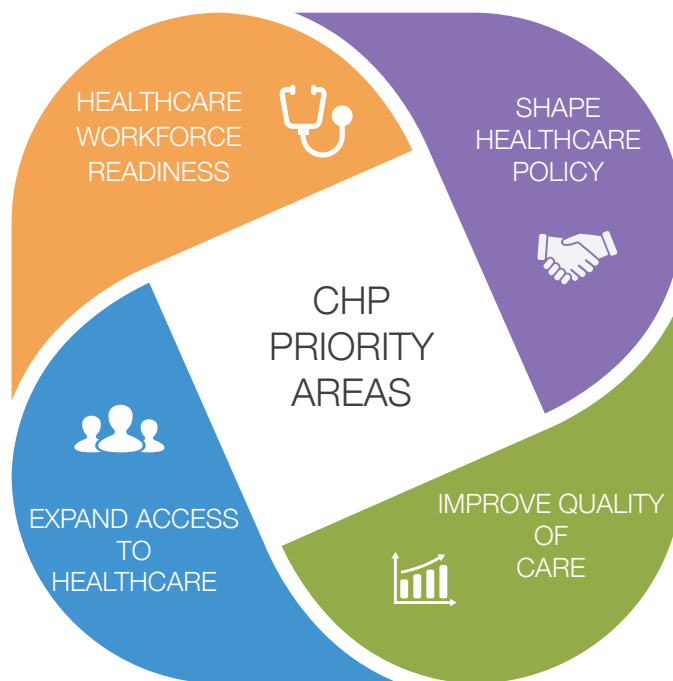


47% of patients were between 20-44 years old.



Medi-Cal became the leading source of coverage for CHP clinic patients, from 36% in 2013 to 47% in 2014.

Community Health Partnership is a consortium of non-profit community health centers and clinics based in Santa Clara and San Mateo Counties. Community Health Partnership's mission is to advocate for affordable and accessible health services for our diverse and multicultural communities regardless of socioeconomic, ethnic, religious, or cultural background, and to support our member organizations in achieving these goals.



1401 Parkmoor Ave, Ste 200
San Jose, California
408.556.6605



www.chpscc.org
[@chpartnership](https://twitter.com/chpartnership)
www.facebook.com/communityhealthpartnership

Data Source: Profile is based on data from January 1 to December 31, 2014 submitted to the Office of Statewide Health Planning and Development (OSHPD)*.